



# K-12 SCHOOLS

Commercial Windows and Doors | Aluminum | Vinyl | Wood Clad



Products and Project References

[www.QuakerCommercialWindows.com](http://www.QuakerCommercialWindows.com)



# Educational Sector

## projects are rarely elemental.

There are many school types in the K-12 world; public and private, kindergarten all the way up to high school. Some with 50 students. Others with a thousand or more. At Quaker, we've worked with every type, so we know that with this varied collection, there's rarely an instance when one school's build is the same as another.

While each school has its own list of specificities, most projects in the K-12 market segment-- whether new construction or replacement -- propose many of the same characteristics:

- shorter time frames to complete the job
- acute attentiveness to delivery schedules
- maximum safety features with full-functionality
- the ability to withstand everyday wear and tear
- high energy-efficiency where needed
- and just as, if not most important, a keen eye kept on allotted budgets

At Quaker Windows & Doors, we fully understand all of these aspects and that's why we're so effective when working within the educational market. Our vast product line and immeasurable experience can make any challenge less daunting.



Photo by Ed Wonsek Art Works, Inc.



Bristol County Agriculture High School  
Dighton, MA  
General Contractor: Gilbane Building Co.  
Architect: HMFH Architecture  
Glazing Contractor: Kapiloffs Glass Inc.



# The Quaker Difference: More than meets the eye.

What distinguishes Quaker from all other window companies isn't always in plain sight. It's The Quaker Difference -- tangible and intangible assets working together to form the most sought-after windows in the market.

- It's a standard of craftsmanship and engineering excellence that we build into every product, distinguishing us from all other window companies in America.
- It's shying away from testing at entry-level, gateway sizes. Instead, we test using exaggerated and even maximum sizing. This ensures the entire scope of a product's sizing will meet the advertised rating.
- It's our "can-do" attitude toward custom projects. Never is a job too custom for Quaker. Our options and accessory choices allow us to do what others can't.
- It's multiple quality checks implemented throughout the manufacturing process to guarantee a paramount product.
- It's our state-of-the-art powder paint facility, one of the largest in the U.S., which allows us to control the quality and consistency of our finish, unlike manufacturers that outsource their painting. As well, it supports our "green" initiatives by employing environmentally-friendly coatings that emit nearly zero VOCs into the air.
- It's employing thicker glass panes which will both lower the amount of stress cracks and raise your ability to control sound intrusion.
- It's professional manufacturing specialists, some with more than 40 years of window experience, providing unparalleled attention to detail from start to finish.
- It's a sales team fully-dedicated to the commercial building sector, working hard to ensure that the product you need is the product you order.
- It's doing more than just selling windows and doors. It's finding the right window and door solution for your project.



That's *The Quaker Difference*.

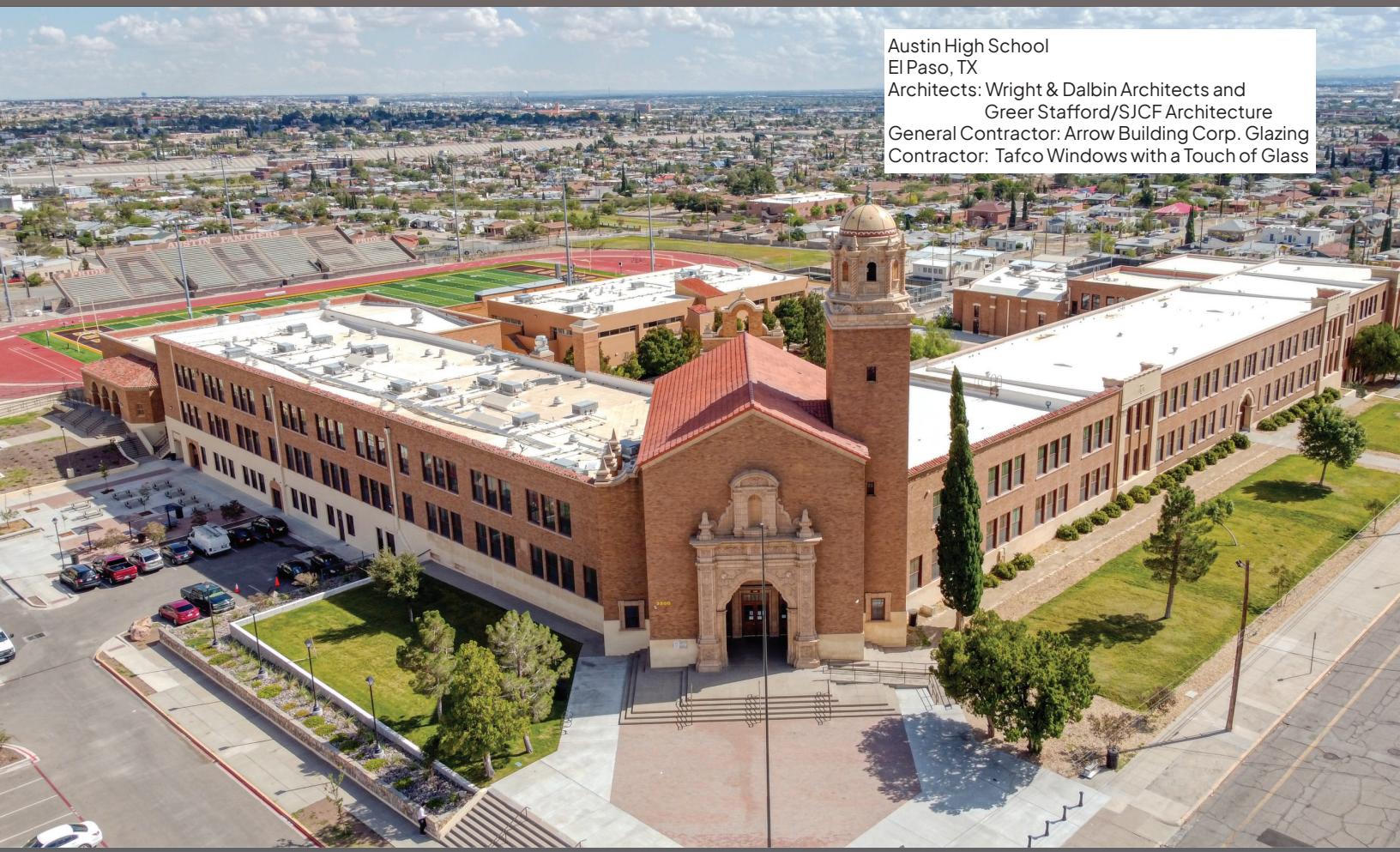
Arlington High School  
Arlington, MA  
General Contractor: Consigil Construction Co.  
Architect: HMFH Architects  
Glazing Contractor: R & R Window Contractors





# Aluminum Windows and Doors

Hung | Casement | Project-Out | Slider | Fixed | Doors



Austin High School  
El Paso, TX  
Architects: Wright & Dalbin Architects and  
Greer Stafford/SJCF Architecture  
General Contractor: Arrow Building Corp. Glazing  
Contractor: Tafco Windows with a Touch of Glass

## FEATURES:

- CW to AW ratings
- Architecturally extruded aluminum
- All products include a thermally-broken design
- Patented OptiCore™ technology for enhanced thermal efficiency (C600/C605 only)
- Modern, squared sash frame or Traditional/Historic sash frame (*availability varies based on series and model*)
- 3/4" to 1 3/8" I.G. with warm-edge spacer
- Commercial-grade hardware
- Full line of operating and fixed window models
- Both Sliding and Terrace Door models
- Product line encompasses New Construction and Replacement applications

## BENEFITS:

- Industry-leading thermal efficiencies
- Green initiatives built into every product
- In-house powder coat facility means no lengthy lead times
- Custom color capabilities
- Split color option i.e. separate colors on exterior and interior (C600/C605 only)
- Standard 1" glass package achieves a minimum of 28 STC
- Blinds/Panel option (C600/C605 and E600 only)
- Standard and custom sizing for all models
- Impact and Florida Building approved products



# Aluminum

## Selection Guide

Model	Series	Frame Depth	Structural Test Rating	Test Size	Air Infiltration	Water Resistance	U-Value Range <sup>#</sup>	SHGC Range <sup>#</sup>	STC Range <sup>x</sup>	OITC Range <sup>x</sup>
Casement	C600/C605	4 1/8"	Up to AW100	48" x 84"	<.10	12.11	.19-.30	.11-.44	28-41	28-34
	E600	3 1/4"	Up to AW100	36" x 72"	<.10	12.11	.32-.39	.12-.26	31-44	25-34
	H450	3 1/4"	CW90	36" x 60"	<.30	10	.39-.44	.14-.48	34-37	29-32
	M600	3 1/4"	AW-PG70	36" x 72"	<.10	12.11	.39-.43	.19-.29	29-43	23-31
Project-Out	C600/C605	4 1/8"	Up to AW100	48" x 72"	<.10	12.11	.19-.30	.11-.44	28-41	28-35
	E600	3 1/4"	AW100	60" x 36"	<.10	15.04	.32-.36	.10-.41		
	H450	3 1/4"	CW70	60" x 36"	<.30	10	.40-.60	.14-.59		
	M600	3 1/4"	AW-PG70	48" x 72"	<.10	12.11	.33-.45	.19-.29		
Project-In	E600	3 1/4"	AW100	60" x 36"	<.10	15.04	.32-.36	.12-.26		
Single Hung	E300	3 1/4"	CW-PG50	56" x 91"	<.30	7.52	.35-.40	.13-.30		
	E500	3 1/4"	AW-PG40	60" x 99"	<.30	8.15	.37-.42	.13-.46		
	H650	4 1/8"	AW-PG60	60" x 99"	<.30	10			31-32	24-26
	T500	3 1/4"	AW-PG50	60" x 99"	<.30	12	.37-.42	.14-.33		
Double Hung	E300	3 1/4"	CW-PG50	47" x 59"	<.30	7.52	.35-.40	.13-.30	34-36	28-31
	E500	3 1/4"	AW-PG40	60" x 99"	<.30	8.15	.37-.42	.13-.46		
Horizontal Slider	E300	3 1/4"	CW-PG50	72" x 60"	<.30	7.52	.35-.40	.14-.31		
	E500	3 1/4"	AW-PG50	99" x 79"	<.30	10.03	.36-.41	.13-.48	33	28
	K200	2 3/8"	CW-PG40	60" x 59"	<.30	6.06	.38-.44	.14-.33	29-51	24-39
Fixed	C600/C605	4 1/8"	AW-PG100	60" x 99"	<.10	15.04	.14-.29	.13-.57	28-44	25-35
	E300	3 1/4"	AW-PG50/CW70	60" x 99"	<.10	10	.25-.31	.16-.37		
	E500	3 1/4"	AW-PG50/CW70	60" x 99"	<.10	10	.25-.31	.16-.37		
	E600	3 1/4"	AW-PG100	60" x 60"	<.10	15.04	.25-.31	.16-.37		
	H450	3 1/4"	AW-PG110	72" x 120"	<.10	15.04	.26-.50	.16-.69		
	H650	4 1/8"	AW-PG90	60" x 99"	<.10	12+				
	K200	2 3/8"	CW50	64" x 71"	<.30	7.52	.27-.32	.16-.37		
	M600	3 1/4"	AW-PG70	60" x 60"	<.10	12.11	.18-.32	.23-.36	32-41	26-31

\*-Ranges based on multiple Low-E/Argon I.G. combinations

<sup>x</sup>-Ranges based on multiple I.G. combinations

All ratings listed are NAFS certified. Periodic re-certification testing is required thus data shown may vary slightly.

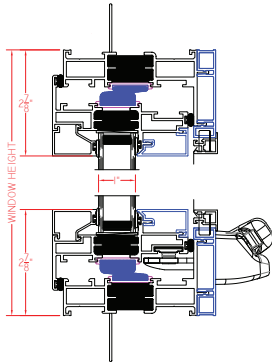


# Aluminum Product Selection Guide

## Casement

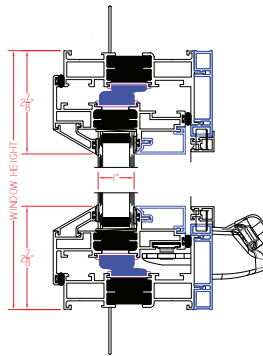
### C600 Series (AW70)

Shown with nailing fin, roto hardware, and modern, square exterior glazing



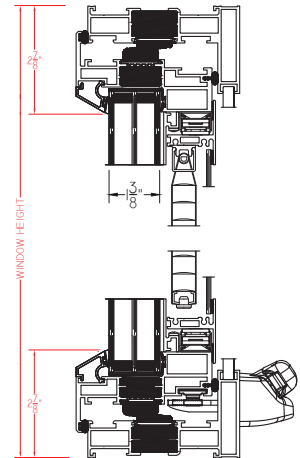
### C605 Series (AW70)

Shown with nailing fin, roto hardware, and traditional, sloped exterior glazing



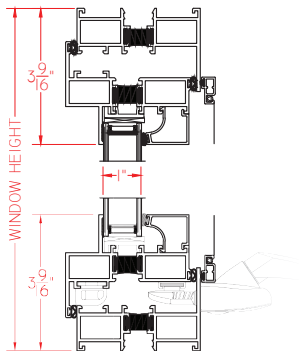
### C605 Series with blinds/panel(AW70)

Shown without nailing fin, with optional triple-pane I.G., roto hardware, beveled exterior glazing



### E600 Series (AW70)

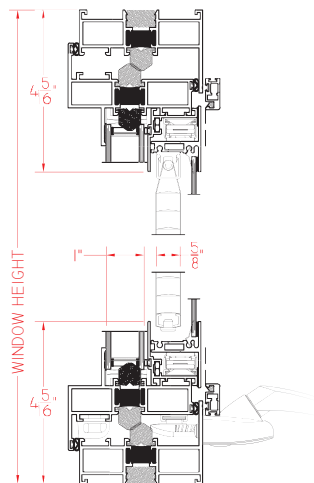
Shown with roto hardware



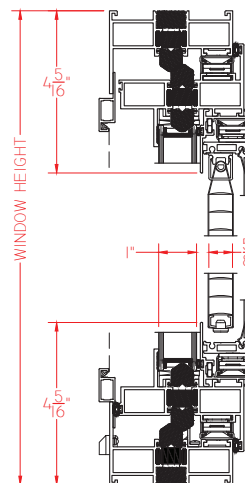
### E600 Series with blinds/panel(AW70)

Outswing model

shown without nail fin, with roto hardware and optional blind/panel

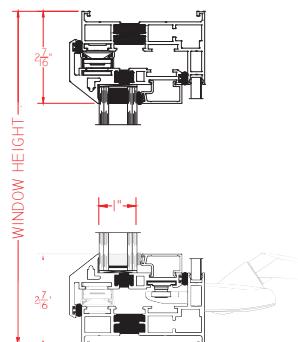


Inswing Model



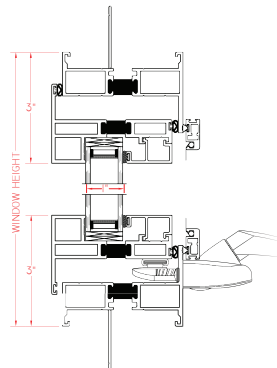
### H450 Series (AW70)

Shown with roto hardware



### M600 Series (AW70)

Shown with roto hardware and optional nailing fin



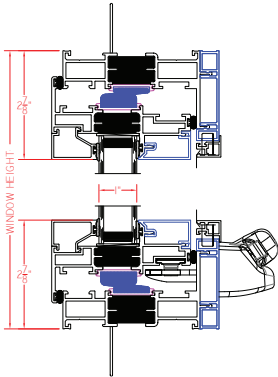


# Aluminum Product Selection Guide

## Project-Out

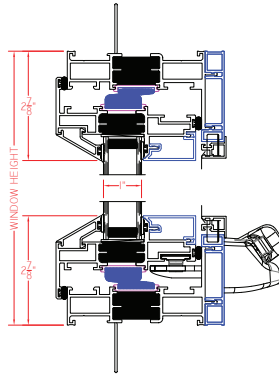
### C600 Series (AW70)

Shown with nailing fin, roto hardware, and modern, square exterior glazing



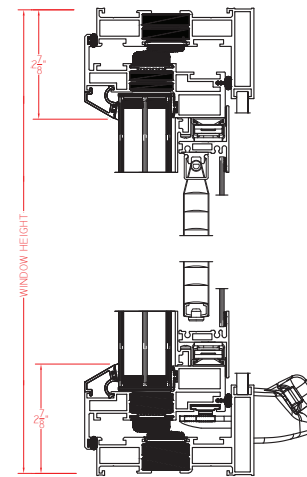
### C605 Series (AW70)

Shown with nailing fin, roto hardware, and beveled exterior glazing



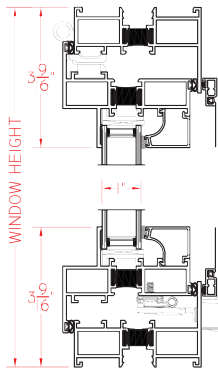
### C605 Series with blinds/panel (AW70)

Shown without nailing fin, triple-pane I.G., roto hardware, beveled exterior glazing and optional blind/panel



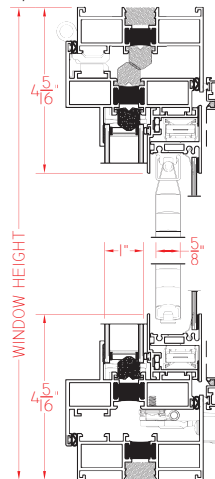
### E600 Series (AW70)

Shown with roto hardware



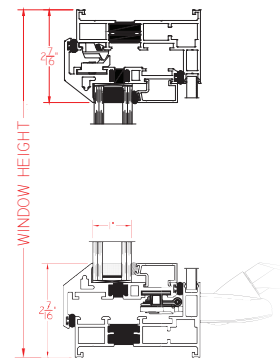
### E600 Series with blinds/panel (AW70)

Shown with roto hardware and optional blind/panel



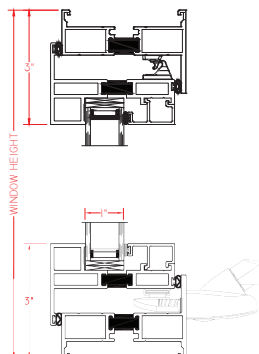
### H450 Series (AW70)

Shown with roto hardware



### M600 Series (AW70)

Shown with 4-bar roto hardware



Friendship Aspire Academy-Garland  
Little Rock, AR  
General Contractor: Kinco Construction  
Architect: WER Architects  
Glazing Contractor: Glass Erectors

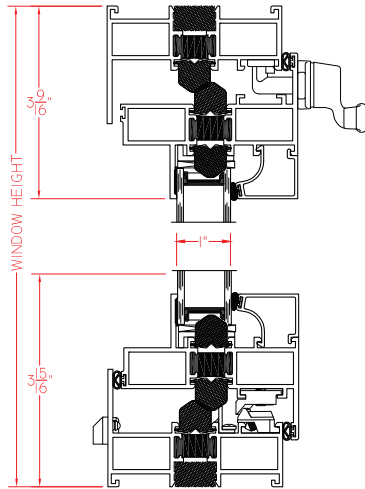




# Aluminum Product Selection Guide

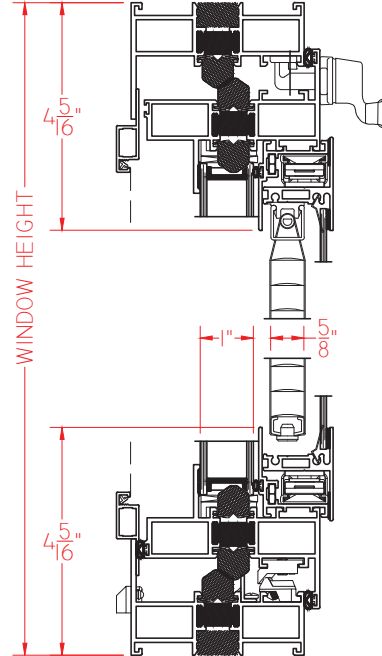
## Project-In

E600 Series (AW100)



E600 Series with blinds/panel(AW100)

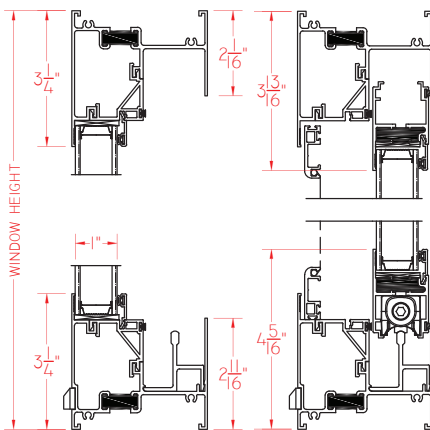
*Shown with optional blind/panel*



## Horizontal Slider

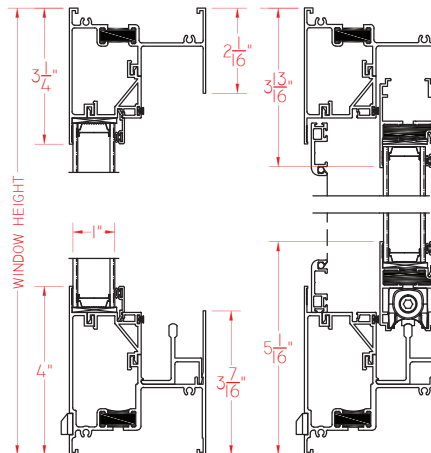
E300 Series (CW50)

*Single Slider model shown*



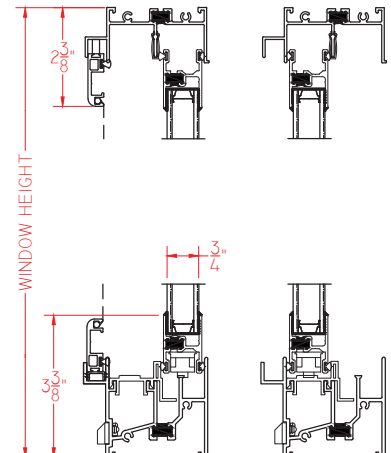
E500 Series (AW50)

*Single Slider model shown*



K200 Series (CW40)

*Single Slider model shown*

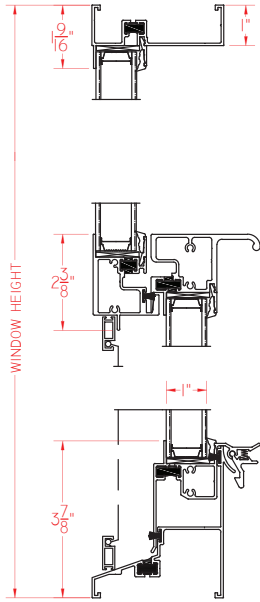




# Aluminum Product Selection Guide

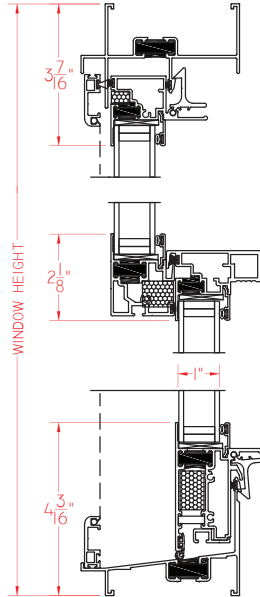
## Single Hung/Double Hung

T500 Series (AW50)



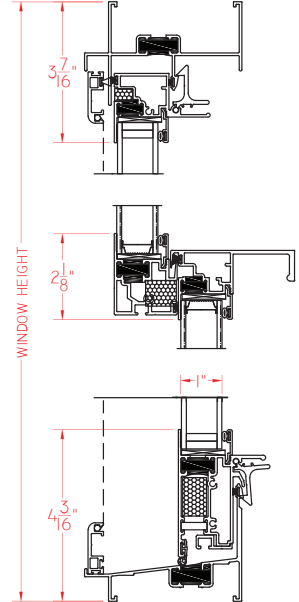
E300 Series (CW50)

Double Hung model shown

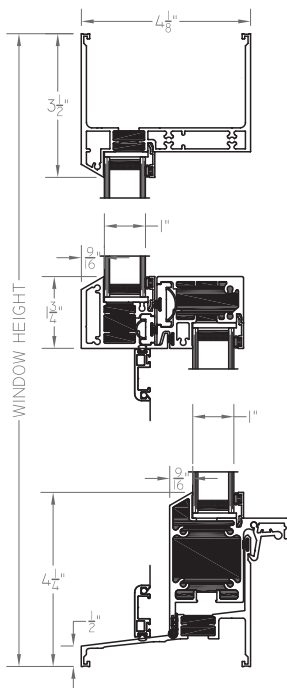


E500 Series (AW40)

Double Hung model shown



H650 Series (AW50\*)



Hannibal High School  
Hannibal, MO  
General Contractor: Performance Services  
Glazing Contractor: American Glass



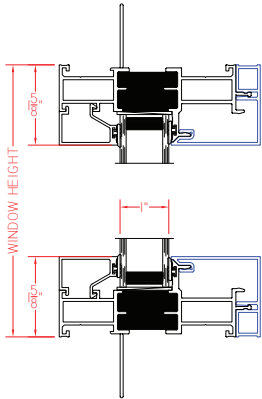


# Aluminum Product Selection Guide

## Fixed

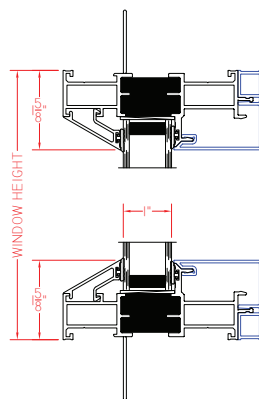
### C600 Series (AW100)

Shown with nailing fin and modern, square exterior glazing



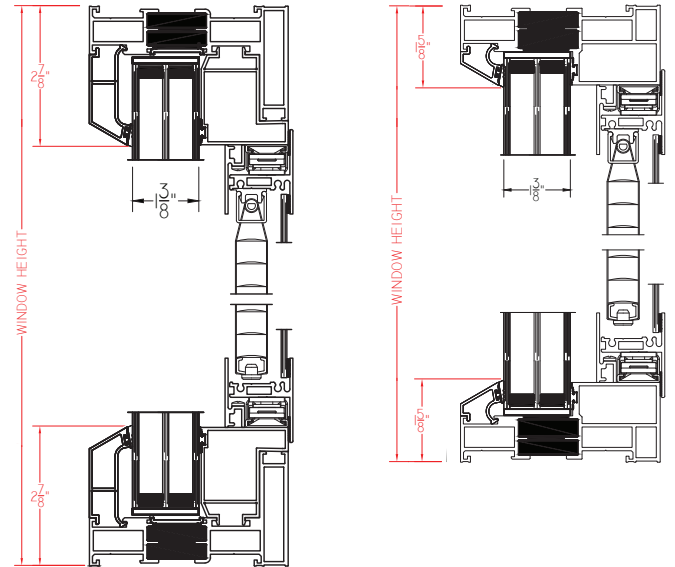
### C605 Series (AW100)

Shown with nailing fin and traditional, sloped exterior glazing



### C605 Series with blinds/panel (AW100)

Wide Rail Shown with traditional sloped exterior glazing, optional triple pane I.G. and optional blinds/panel  
Narrow Rail

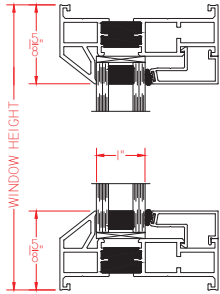


Trinity Falls Prep School  
Tinton Falls, NJ  
General Contractor: Sweetwater Const.  
Architect: Studio Hillier Architecture  
Glazing Contractor: Glass Castle of NJ

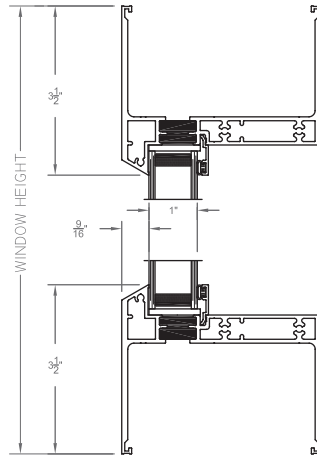
# Aluminum Product Selection Guide

## Fixed

H450 Series (AW110)

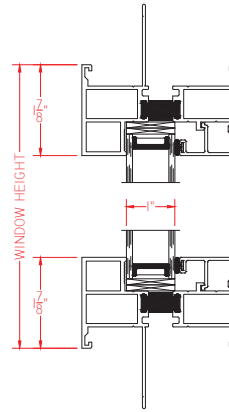


H650 Series (AW90)

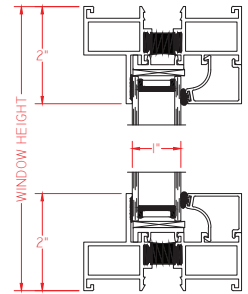


M600 Series (AW70)

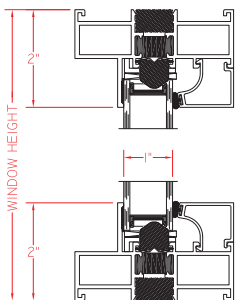
*Shown with optional nailing fin*



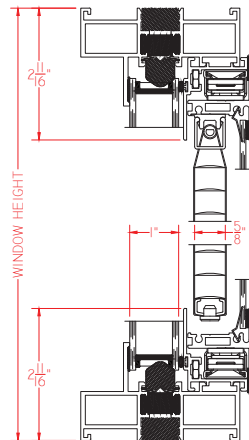
T600 Series (AW70)



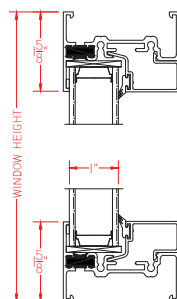
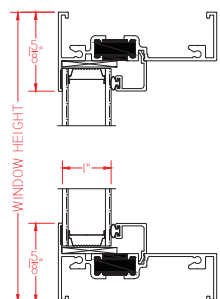
E600 Series (AW80)



E600 Series with  
blinds/panel (AW80)



E300 Series (AW50/CW70) K200 Series (CW50)





# Vinyl Windows

Hung | Casement | Project-Out | Slider | Fixed



Winskill Elementary School  
Lancaster, WI  
Comm. Window Distributor: Spahn & Rose

## FEATURES:

- LC to CW Ratings
- 100% pure uPVC vinyl
- Fusion welded corners
- .060 Vinyl thickness
- Metal reinforcements in critical areas
- Amesbury/Truth® operating hardware
- Block & Tackle balancers on all hung units
- 3/4" to 1 3/8" I.G. with warm-edge spacer
- Full line of operating and fixed window models
- Product line encompasses New Construction and Replacement applications

## BENEFITS:

- Value added alternative to traditional aluminum windows
- Industry-leading thermal efficiencies
- Green initiatives built into every product
- Impact and Florida Building approved products
- Standard I.G. achieves a minimum of 28 STC
- Custom painted exterior color capabilities\*
- V300 Series Casement and Fixed models are PHIUS certified
- Standard and custom sizing for all models

\*-some limitations may apply

# Vinyl

## Windows and Doors

Model	Series	Frame Depth	Structural Test Rating	Test Size	Air Infiltration	Water Resistance	U-Value Range <sup>#</sup>	SHGC Range <sup>#</sup>	STC Range <sup>x</sup>	OITC Range <sup>x</sup>
Casement	V250	3 1/4"	LC35	32" x 60"	<.30	5.43	.23-.26	.11-.43		
	V300	3 1/4"	CW50	36" x 78"	<.30	7.5	.23-.27	.11-.27	34-41	29-34
Project-Out	V250	3 1/4"	LC35	48" x 32"	<.30	5.43	.23-.27	.12-.28		
	V300	3 1/4"	CW50	60" x 32"	<.30	7.5	.24-.28	.11-.41	35	29
Single Hung	V250	3 1/4"	LC35	44" x 75"	<.30	5.43	.25-.30	.14-.51	29-35	24-29
	V300	3 1/4"	CW50	56" x 91"	<.30	7.52	as low as 0.25	as low as 0.25		
Double Hung	V250	3 1/4"	LC35	36" x 84"	<.30	7.52	.25-.30	.14-.50		
Horizontal Slider	V250	3 1/4"	LC35	63" x 44"	<.30	7.52	.24-.30	.14-.50		
	V300	3 1/4"	CW50	75" x 44"	<.30	7.52	as low as 0.25	as low as 0.25		
Fixed	V250	3 1/4"	LC35	56" x 56"	<.30	7.52	.22-.28	.15-.53		
	V300	3 1/4"	CW50	78" x 78"	<.30	7.5	.14-.28	.15-.49	35	29

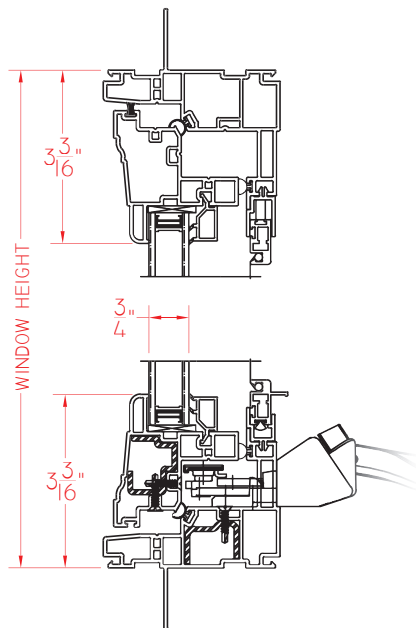
\*-Ranges based on multiple Low-E/Argon I.G. combinations

x-Ranges based on multiple I.G. combinations

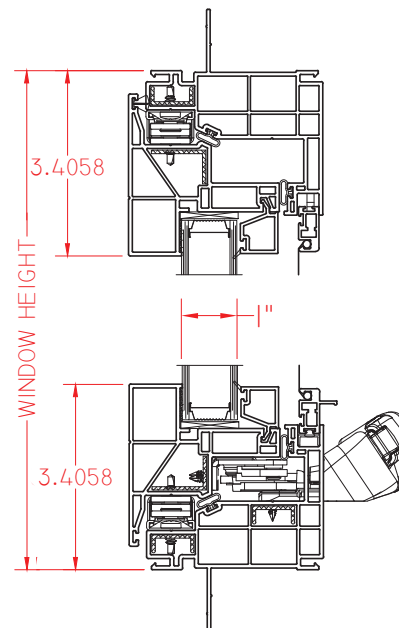
All ratings listed are NAFS certified. Periodic re-certification testing is required thus data shown may vary slightly.

## Casement

V250 Series (LC30)



V300 Series (CW50)



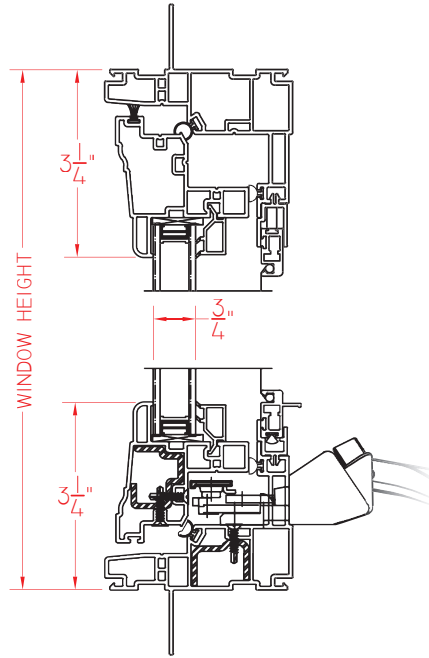


# Vinyl Product Selection Guide

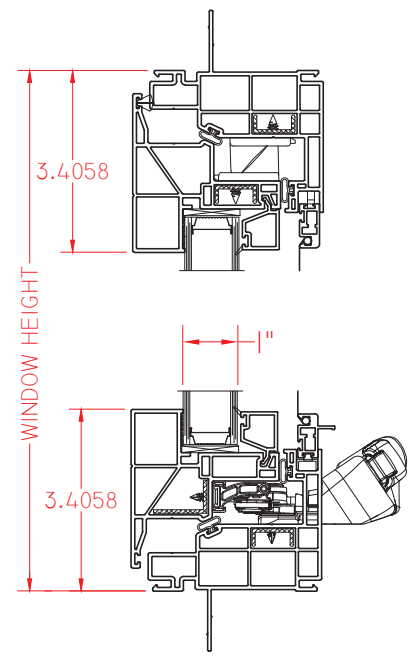
## Project-Out



V250 Series (LC35)

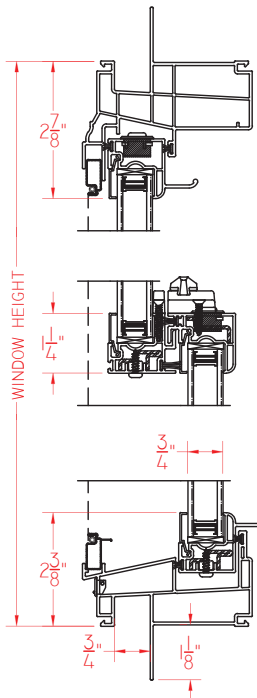


V300 Series (CW50)

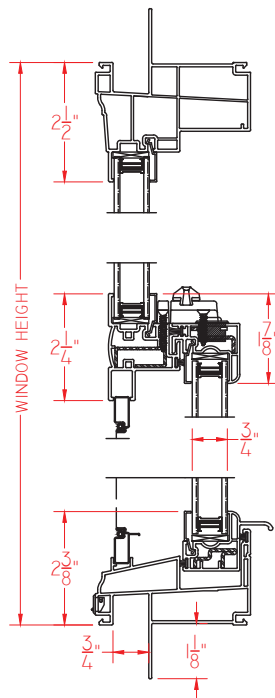


## Single Hung / Double Hung

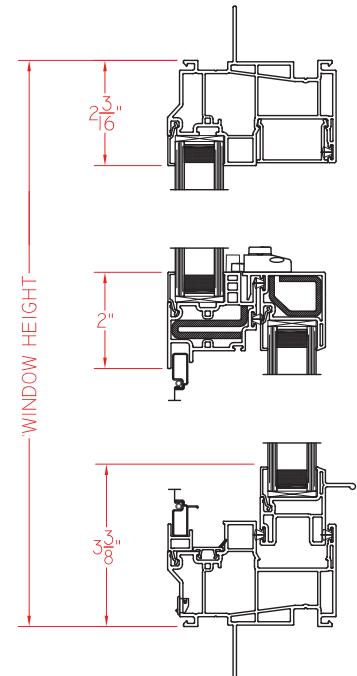
V250 Series Double Hung (LC35)



V250 Series Single Hung (LC35)



V300 Series Single Hung (CW50)

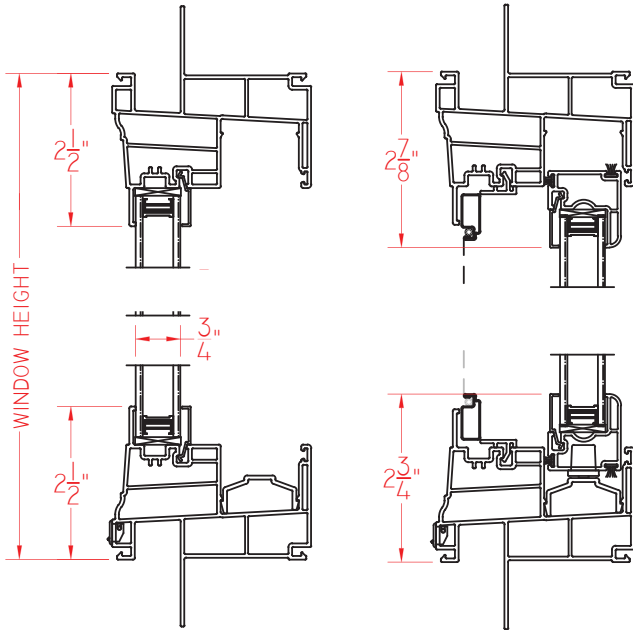


# Vinyl Product Selection Guide

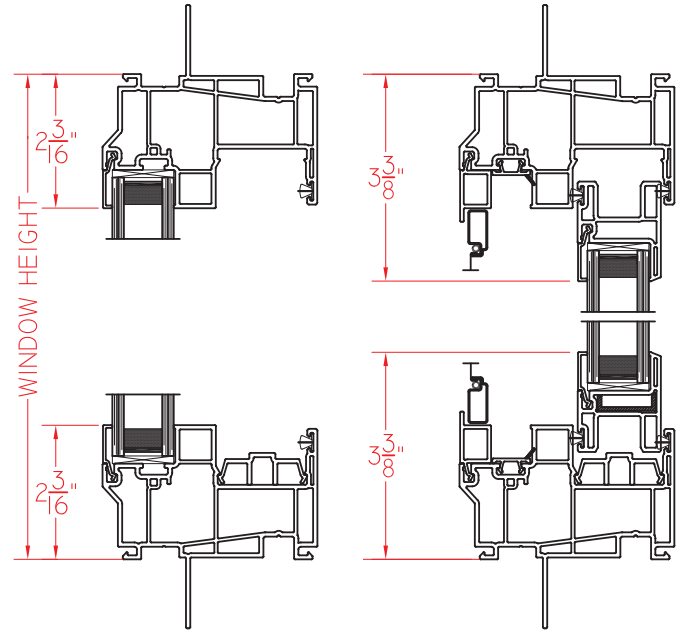
## Horizontal Slider

### V250 Series (LC35)

Single Slider model shown



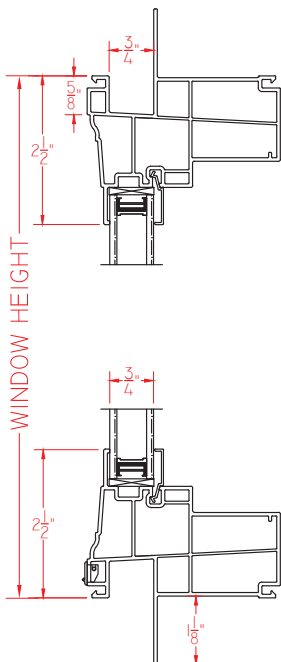
### V300 Series (CW50)



## Fixed

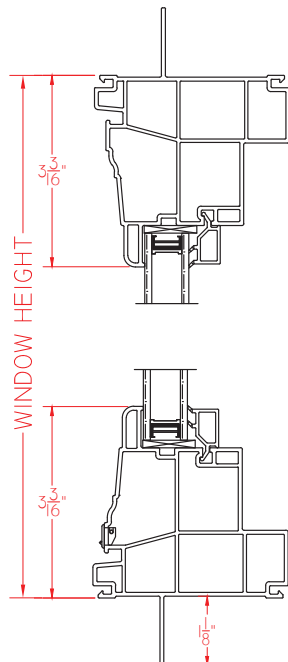
### V250 Series (LC35)

Sash set model to match all hung and horizontal sliding units



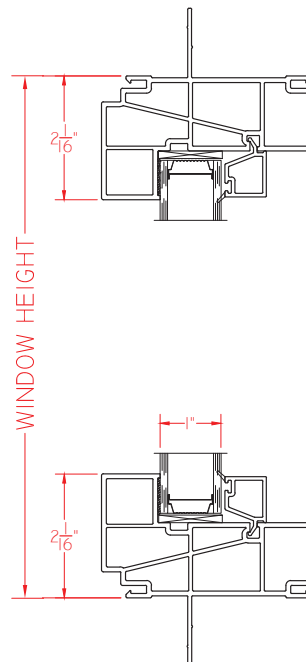
### V250 Series (LC35)

Sash set model to match all casement and project-out units



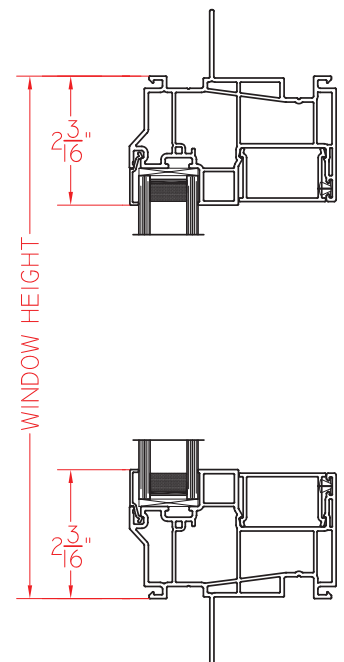
### V300 Series (CW50)

Sash set model to match all casement and project-out units



### V300 Series (CW50)

Sash set model to match all hung and horizontal sliding units

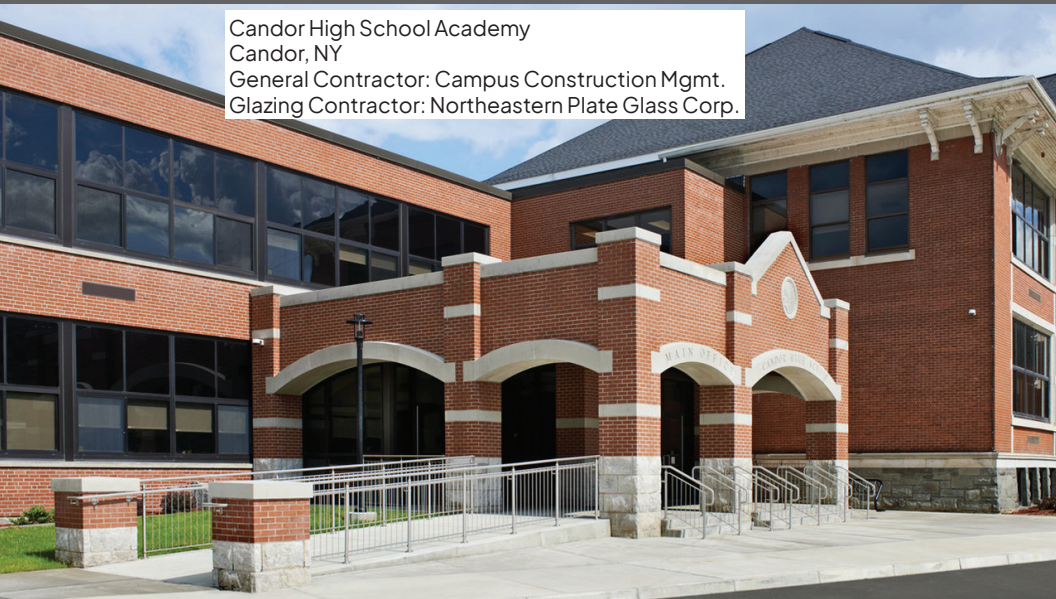




# Options

## Accessories, Colors, Finishes

### Installation Accessories



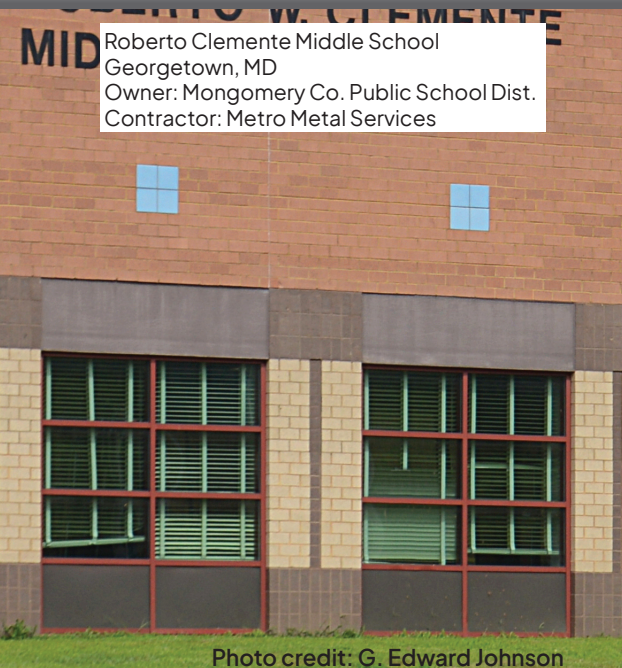
Candor High School Academy  
Candor, NY  
General Contractor: Campus Construction Mgmt.  
Glazing Contractor: Northeastern Plate Glass Corp.

Quaker can provide a multitude of installation accessories for both aluminum and vinyl products.

- Receptors and Subsills
- Panning and Break Metal
- Vertical and Horizontal Mull Systems
- Trim
- Factory applied or sent loose for jobsite installation\*
- Decades of experience producing custom, job-specific accessory dies

*\*Some limitations may apply*

### Colors & Finishes



Roberto Clemente Middle School  
Georgetown, MD  
Owner: Montgomery Co. Public School Dist.  
Contractor: Metro Metal Services

Photo credit: G. Edward Johnson

#### For Quaker Aluminum Windows:

- Finishes: FGIA 2604 Finish is our standard. Upgrades to a 2605 finish are available for most colors.
- Choose from 30 "Quick-Pick" colors. If that's not enough, our custom color capabilities put any color at your fingertips.
- Class I Anodized is available upon request

#### For Quaker Vinyl Windows:

- Pure uPVC in White or Sandstone vinyl colors
- Painted Vinyl: Available for exterior only, Quaker's painted vinyl affords a color palette which far exceeds traditional expectations because of an ability to produce any custom color you have in mind.
- FGIA 615-05 is the standard finish for all painted vinyl colors
- High-Performance Laminate Coatings: Laminate coatings, which are in accordance to RAL GZ 716/1, can be used on the exterior of all vinyl products. For a limited amount of Quaker's vinyl windows, laminate can be added to the interior too.



# Options

## Glass & Grids

### Glass

#### Pane thickness:

- $\frac{3}{32}$ "
- $\frac{1}{8}$ "
- $\frac{5}{32}$ "
- $\frac{3}{16}$ "
- $\frac{1}{4}$ "
- $\frac{5}{16}$ "

#### I.G. thickness:

- $\frac{3}{4}$ " (Double pane)
- 1" (Double pane)
- $1\frac{3}{8}$ " (Triple pane)

#### Glass Types:

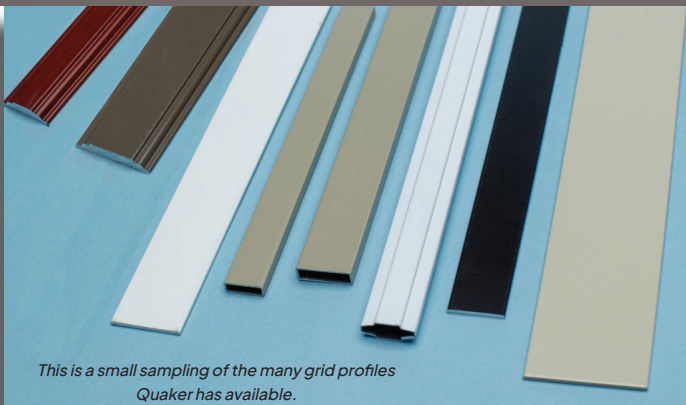
- Dual Silver Low-E
- Triple Silver Low-E
- Interior Pane Low-E
- Tempered Safety Glass
- Laminated
- Spandrel
- Solar-Cooled
- Obscure (for privacy)
- Tinted
- Bird Glass
- and many others

*Some limitations may apply based upon several variables including but not limited to the window/door series chosen and requested/required specifications.*

Eldon Middle School  
Eldon, MO  
General Contractor: Verslues Construction  
Comm. Window Distributor: Becker Millwork



### Grids



*This is a small sampling of the many grid profiles  
Quaker has available.*

#### Grids Between the Glass:

- Flat ( $\frac{5}{8}$ ",  $\frac{3}{4}$ " or 1")
- Contoured ( $\frac{3}{4}$ " )

#### Simulated Divided Lites:

- Numerous profiles and combinations available  
( $\frac{1}{2}$ " to  $3\frac{3}{4}$ " wide)

*Some limitations may apply*



Columbus Collegiate Academy West  
Columbus, OH  
Owner: United Schools Network  
Architects: Triad Architects  
Contractor: Corna-Kokosing Const.  
Dealer: Northern Window & Door



# References

See more of Quaker in recently completed projects for these schools

## ALABAMA

North Sand Mountain High School - Bryant

## ARIZONA

Red Rock Day School - Red Valley  
Cartwright School District #83 - Phoenix

## ARKANSAS

Sloan-Hendrix School District - Imboden  
Two Rivers School District - Ola

## COLORADO

Bryant Webster Elementary School - Denver

## CONNECTICUT

Tolland Middle School - Tolland  
Westbrook High School - Westbrook

## DELAWARE

Newark Charter School - Newark

## FLORIDA

Chumuckla Elementary School - Jay

## GEORGIA

Pebblebrook High School - Mableton  
Tift County School District - Tifton

## ILLINOIS

Baldwin Elementary School - Quincy  
Carol Stream Elementary School - Carol Stream  
Denman Elementary School - Quincy  
Iles Elementary School - Quincy  
Legal Prep Charter Academy - Chicago  
Macomb Middle School - Macomb  
Nazareth Academy High School - La Grange Park  
Riley Comm. Consolidated School Dist. - Marengo  
Robert Fulton Elementary School - Chicago  
Rooney Elementary School - Quincy  
St. Luke's Academy - Chicago

## INDIANA

Lake Ridge New Tech School - Gary

## IOWA

Dubuque High School - Dubuque  
Solon High School - Solon

## KANSAS

USD 316 Golden Plains Elementary School - Selden

## KENTUCKY

Jody Richards Elementary School - Bowling Green  
Our Lady of the Sacred Heart Academy - Walton  
St. Martha Catholic School - Louisville

## LOUISIANA

Lincoln Preparatory School - Grambling  
St. Augustine High School - New Orleans  
St. James Episcopal Day School - Baton Rouge

## MARYLAND

Maryland School for the Blind - Baltimore  
Roberto Clemente Middle School - Georgetown  
St. Margaret School - Bel Air

## MASSACHUSETTS

Rollins School - Lawrence  
St. Mark's School - Southborough  
Wayland Middle School - Wayland  
Yeshiva Ohr Yisrael School - Chestnut Hill

## MICHIGAN

Robert Nickels Intermediate School - Byron Center  
St. John's Lutheran School - Grand Haven

## MINNESOTA

Browerville Public School - Browerville  
Plainview-Elgin-Millville High School - Plainview  
St. Frances de Sales School - St. Paul

## MISSISSIPPI

Attala County School District - Kosciusko  
Brandon Middle School - Brandon  
Canton 9th Grade Academy - Canton  
Chastain Middle School - Jackson  
Ethel High School - Ethel  
Greenlee Elementary School - McCool  
Indianola Academy - Indianola  
McNeal Elementary School - Canton  
Pearl River County Elementary - McNeill

## MISSOURI

Blessed Teresa of Calcutta School - Ferguson  
Central VPA High School - St. Louis  
City Garden Montessori School - St. Louis  
East Elementary School - Jefferson City  
Hallsville Primary School - Hallsville  
Hannibal Middle School - Hannibal  
Marian Middle School - St. Louis  
Mark Twain High School - Center  
Missouri School for the Deaf - Fulton  
Nottingham CAJT High School - St. Louis  
Novinger High School - Novinger  
Ralls County R-2 School District - Center  
Southland C-9 School District - Cardwell  
St. Mary's Parochial School - Frankenstein  
Vienna High School - Vienna



## NEBRASKA

Emerson Elementary School - Alliance  
Grandview Elementary School - Alliance  
Valentine High School - Valentine

## NEW YORK

Candor High School Academy - Candor  
Lackawanna High School - Lackawanna  
Martin Road Elementary School - Lackawanna

## NORTH CAROLINA

North Newton Elementary School - Lexington  
W.G. Pearson Middle School - Durham

## OHIO

Bishop Hartley High School - Columbus

## OKLAHOMA

Primrose School of South Tulsa - Tulsa

## OREGON

Hanby Middle School - Gold Hill  
Medford School District - Medford

## PENNSYLVANIA

Gateway Middle School - Monroeville  
Goddard School - Philadelphia  
Western PA. School for the Deaf - Edgewood

## RHODE ISLAND

North Smithfield School District - North Smithfield

## SOUTH CAROLINA

Newberry Elementary School - Newberry

## TENNESSEE

Center Hill Middle School - Memphis  
Collierville School System Admin. Bldg. - Collierville

## TEXAS

Atonement Academy - San Antonio  
Doss School - Doss  
Fort Worth County Day School - Fort Worth  
Frona ISD High School - Frona  
Meadows Independent School District - Lubbock

## VERMONT

Otter Valley Union High School - Brandon  
St. Francis Xavier School - Winooski

## WEST VIRGINIA

Burnesville Elementary School - Burnsville  
Chestnut Mountain Ranch School - Morgantown

## WISCONSIN

Veritas High School - Milwaukee

Godwin Hall  
North Carolina School of Science & Mathematics  
Morganton, NC  
Owner: NCSSM  
Architect: Duda Paine Architects  
Contractor: Barnhill Contracting  
Glazing Contractor: Carolina Classic Windows & Glass








# K-12 SCHOOLS

Find more information on Quaker windows and doors



 [www.QuakerCommercialWindows.com](http://www.QuakerCommercialWindows.com)

 1-800-347-0438

 [commercial@quakerwindows.com](mailto:commercial@quakerwindows.com)



Made in America: All Quaker products are designed and manufactured in the United States at our state-of-the-art facilities in Eldon, MO (above) and Freeburg, MO.



March, 2023 V1



## ON THE COVER:

Martin Luther King Middle School  
Hartford, CT  
General Contractor: Downes Construction  
Architect: JCJ Architecture  
Glazing Contractor: Cherry Hill Glass Co.